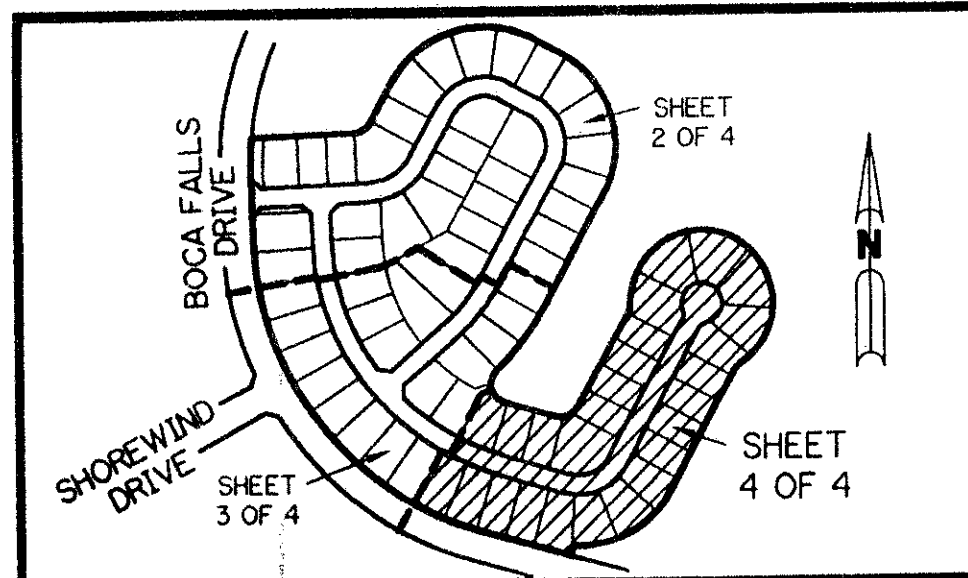


201-021



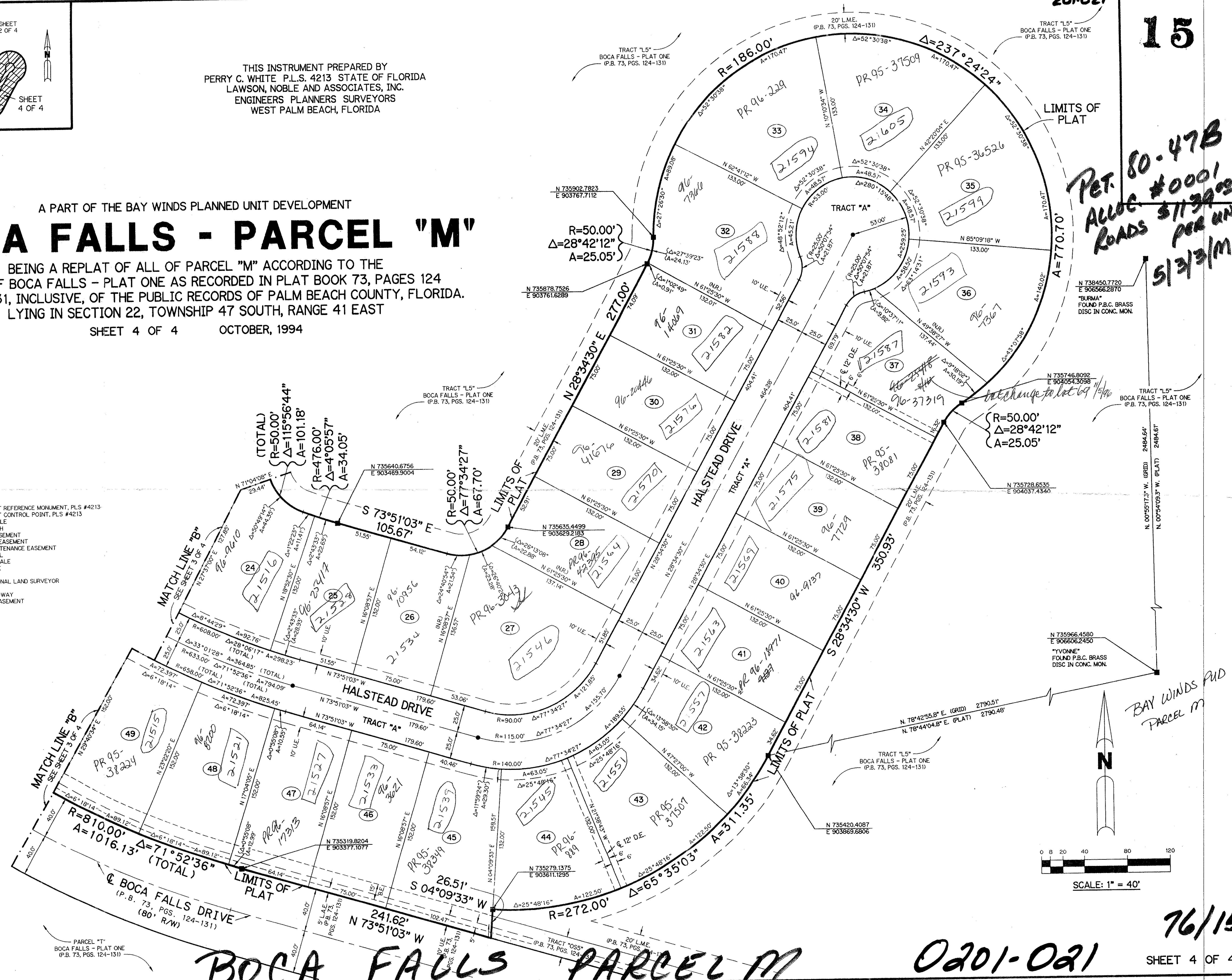
THIS INSTRUMENT PREPARED BY
PERRY C. WHITE P.L.S. 4213 STATE OF FLORIDA
LAWSON, NOBLE AND ASSOCIATES, INC.
ENGINEERS PLANNERS SURVEYORS
WEST PALM BEACH, FLORIDA

BOCA FALLS - PARCEL "M"

A PART OF THE BAY WINDS PLANNED UNIT DEVELOPMENT
BEING A REPLAT OF ALL OF PARCEL "M" ACCORDING TO THE
PLAT OF BOCA FALLS - PLAT ONE AS RECORDED IN PLAT BOOK 73, PAGES 124
THROUGH 131, INCLUSIVE, OF THE PUBLIC RECORDS OF PALM BEACH COUNTY, FLORIDA.
LYING IN SECTION 22, TOWNSHIP 47 SOUTH, RANGE 41 EAST

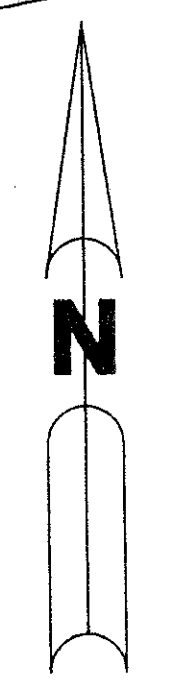
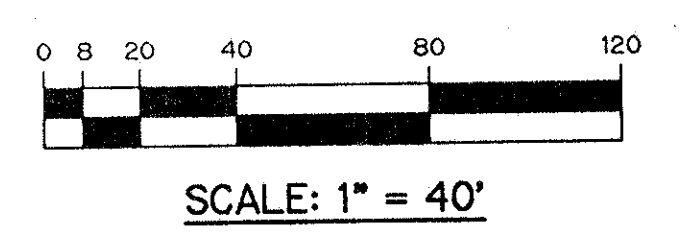
SHEET 4 OF 4 OCTOBER, 1994

- LEGEND:**
- - PERMANENT REFERENCE MONUMENT, PLS #4213
 - - PERMANENT CONTROL POINT, PLS #4213
 - Δ - DELTA ANGLE
 - A - ARC LENGTH
 - B.E. - BUFFER EASEMENT
 - D.E. - DRAINAGE EASEMENT
 - L.M.E. - LAKE MAINTENANCE EASEMENT
 - N.R. - NOT RADIAL
 - N.T.S. - NOT TO SCALE
 - P.B. - PLAT BOOK
 - P.GS. - PAGES
 - P.L.S. - PROFESSIONAL LAND SURVEYOR
 - R - RADIUS
 - R/W - RIGHT-OF-WAY
 - U.E. - UTILITY EASEMENT



*PET. 80-47B
ALLOC #0001
ROADS \$1139.09
PER UNIT
\$133/M*

Interchange to lot 69 11/96



*BAY WINDS PUD
PARCEL M*

BOCA FALLS
SUBDIVISION * PARCEL "M"
BOOK 76 PAGE 15
FLOOD ZONE AO-1 FLOOD MAP #100B
QUAD # 69 ZONING RT
SE 80-47 ZIP CODE 33428
PUD NAME THE BAY WINDS

T42-77B

BOCA FALLS PARCEL M

0201-021